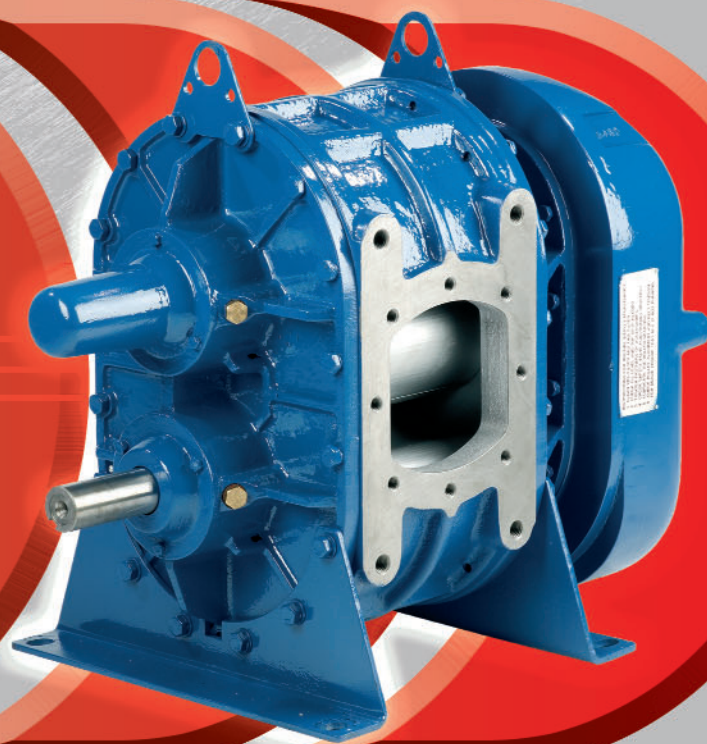


TRANSAIRVAC
INTERNATIONAL LTD

VR

BLOWERS



➔ **VR-113**

➔ **VR-142**

➔ **VR-170**

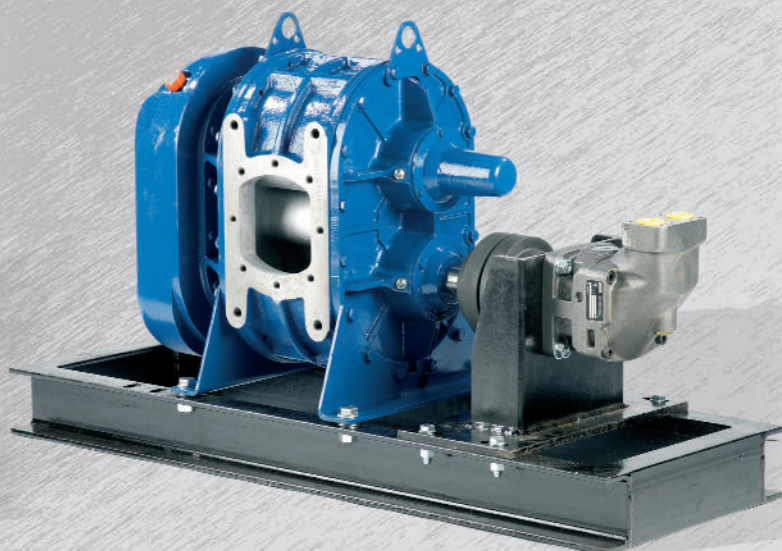
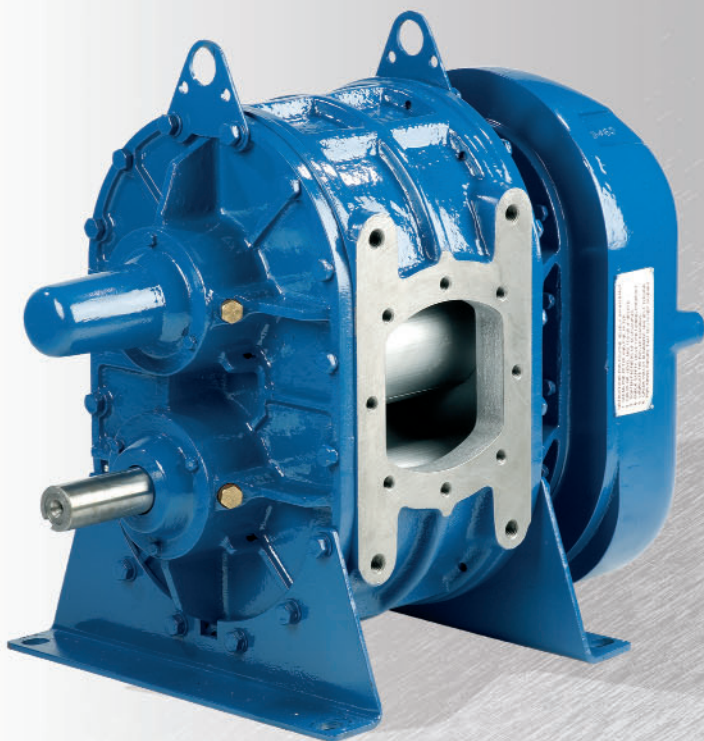
APPLICATIONS

Road Tank Discharge for...

- Rotary Valve Vehicles
- Skeletal Trailers
- Animal Feed Vehicles
- 1 Bar Pressure Tankers



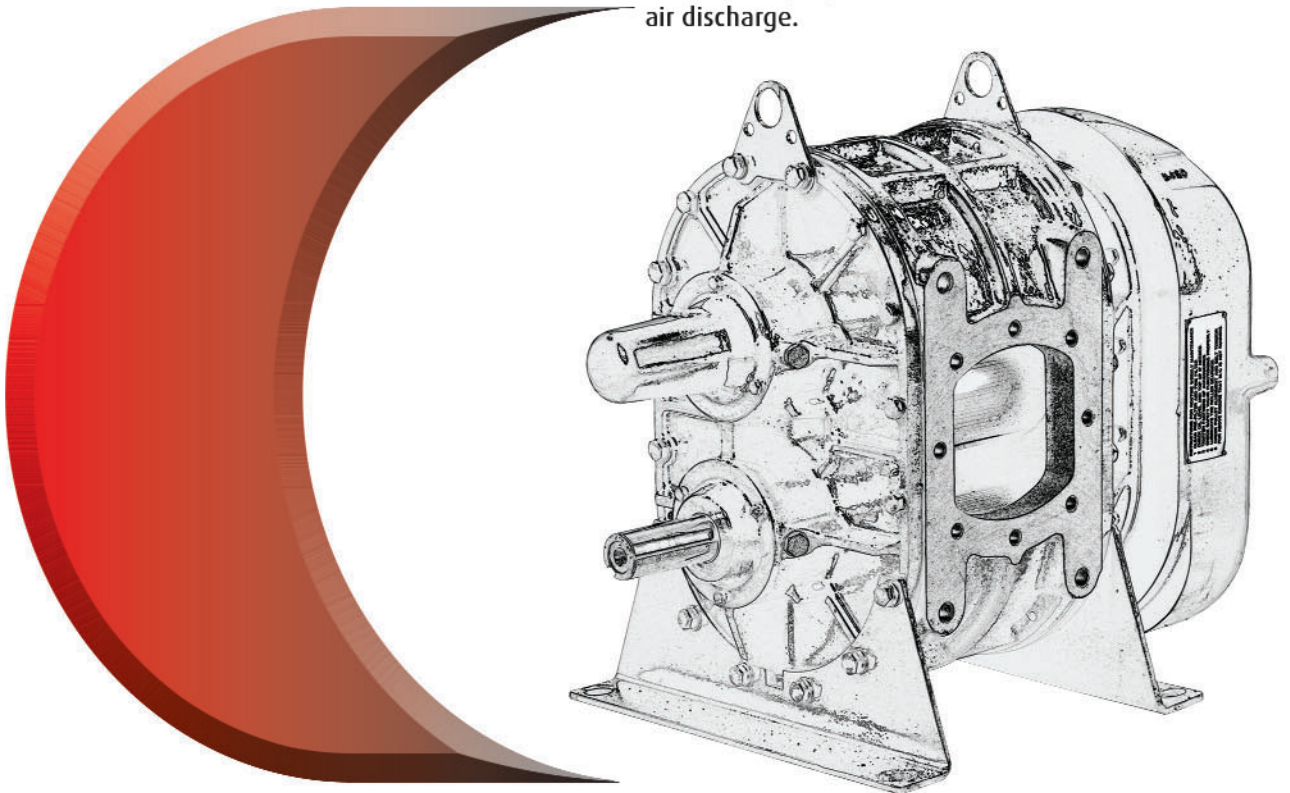
VR
BLOWERS



The VR Range of blowers are specially designed for road transport applications. This bi-lobe roots type blower is a well known product world-wide and is designed to give years of reliable service.

They have a special feature of carbon-tipped rotors which allow them to work at optimum tolerance and efficiency. This gives lower power consumption and lower discharge temperatures.

The VR range of blowers are used extensively in rotary valve vehicle applications for lean phase pneumatic conveying systems and 1 bar pressure tank systems. The simple design is reliable and robust especially in the very arduous application of road transport. It has grease-packed bearings on the drive end and timing gears and non-drive end bearings encased in an oil bath sump, splash lubricated. 100% oil free air discharge.



FEATURES

- **Tacho Drive Mounting Position**
for optional tachometer kit giving remote speed in r.p.m.
- **Twin Shaft**
clockwise or counter-clockwise rotation
- **Oil Splash Lubrication**
for timing gears and non-drive end bearings
- **Flat Face Mounting**
for space saving
- **Cast Iron Rotors**
with carbon tipped rotors for optimum efficiency
- **Grease Packed Drive End Bearings**

TRANSAIRVAC

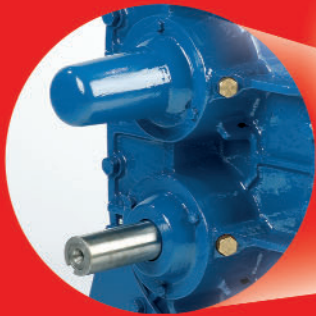
INTERNATIONAL LTD



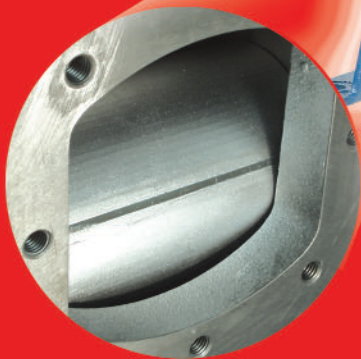
VR BLOWERS

GREASE
PACKED
BEARINGS

OIL SPLASH
LUBRICATION



TWIN SHAFT
ROTATION



CARBON TIPPED
CAST IRON ROTORS



FLAT FACE
MOUNTING



MOUNTING POSITION
FOR OPTIONAL
TACHO DRIVE

BASIC TECHNICAL INFORMATION

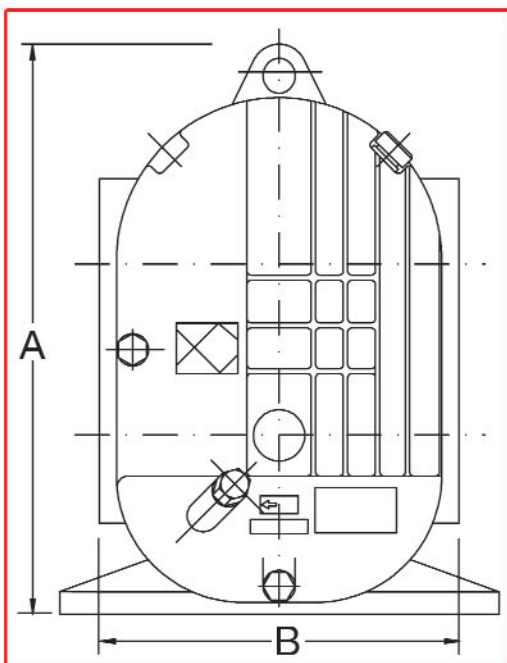
	A mm	B mm	C mm	D Shaft mm	E mm	F Bore mm	Weight (Kg)	Pressure Max (Barg)	Flow Max (m ³ /hr)
VR-113	545	305	645	38	179	100	129	1.2	1900
VR-142	545	330	685	38	179	125	152	1.0	2500
VR-170	545	330	725	38	179	150	168	0.8	2800

Full performance curves and dimensional drawings are available on request.

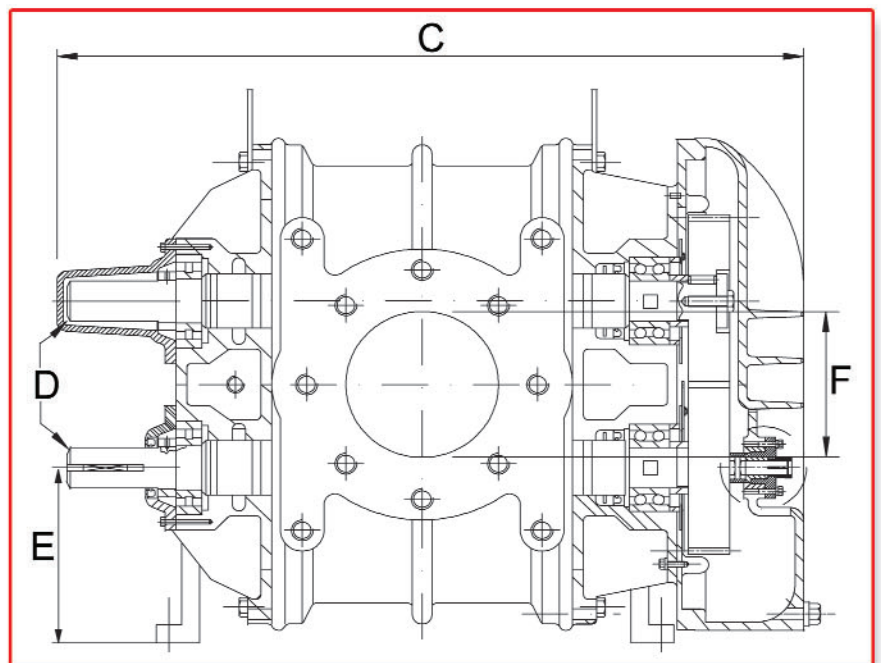
OPTIONS

- Drive Flange
- Inlet Air Filter
- Diesel Engine Drive
- Hydraulic Drive
- Non Return Valve
- Electric Motor Packages
- Tipping Pump
- Pressure Relief Valve
- Tachometer Kit

REAR VIEW



SIDE VIEW



ANCILLARIES

Inlet air filters are available in two types:

1. Remote mounted air filter comes complete with mounting brackets, flexible hose, clips and connecting flange.
2. Direct mounted suction filter silencer.



Non-return valve

This is a full flow design non-return valve.

Pressure relief valve

Full flow pressure relief valve available in a variety of settings.

After air coolers

For temperature sensitive products - available with hydraulic drive fan and 12 and 24 volt DC fan.



Discharge air filtration

Available with 5 micron as standard with optional 80 micron elements.



Tachometer

The tachometer can be remotely mounted in a convenient position for speed measurement in r.p.m.



Other products

available for this application are:

- Hydraulic Coolers
- Diesel Engine Drive Packages
- Electric Motor Packages

