

RANGER PUMP

Gear pump for tanker unloading

This small compact gear pump is proving to be a success with tanker operators. The close coupled hydraulic motor design is lightweight and compact.

Product features:

- Pulsation free
 - Mechanical seal-or packed gland
 - Close coupled hydraulic drive arrangement
 - Small footprint - high flow rate
 - Integral Pressure Relief Valve



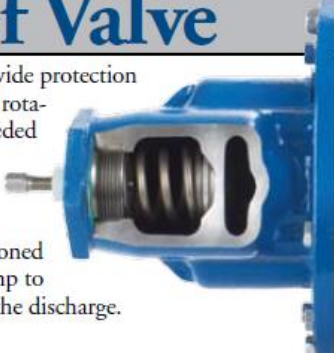
TRANSAIRVAC
INTERNATIONAL LTD

www.transairvac.com

Field Adjustable Relief Valve

The relief valve will provide protection in only one direction of rotation. A relief valve is needed for the pump system to protect the pump from over-pressures.

The valves can be positioned to either side of the pump to provide protection for the discharge.



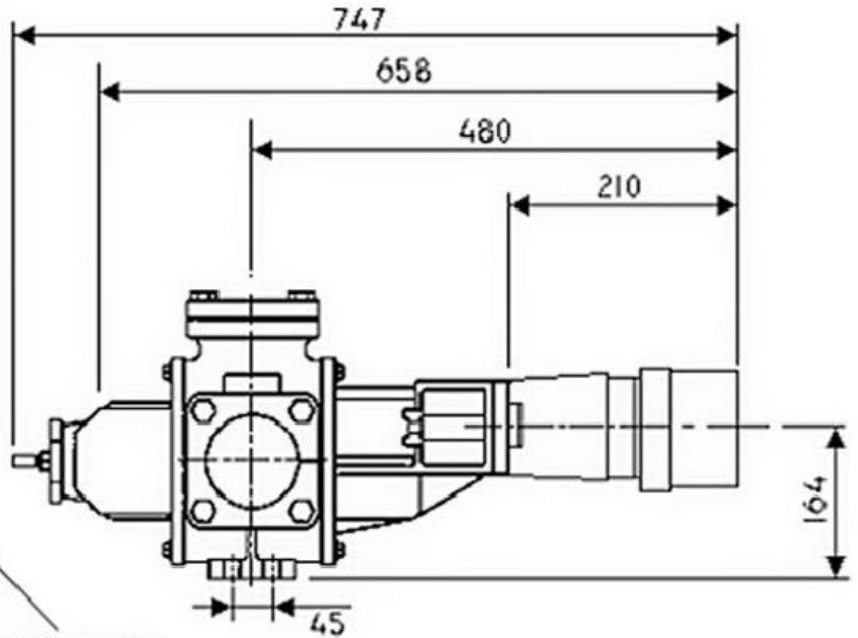
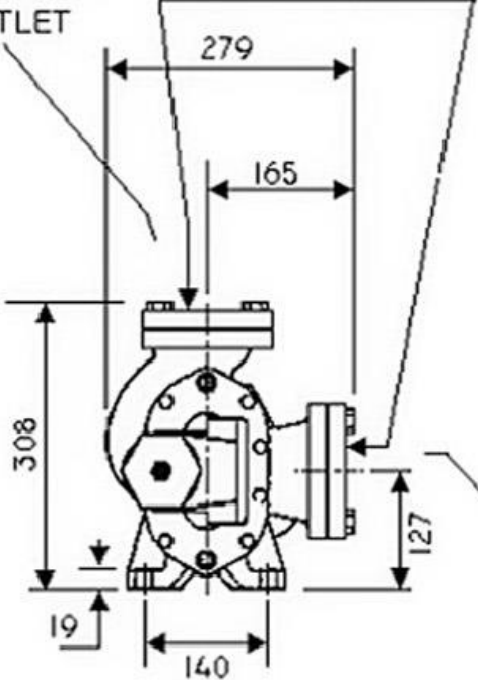
RANGER PUMP

TECHNICAL SPECIFICATION

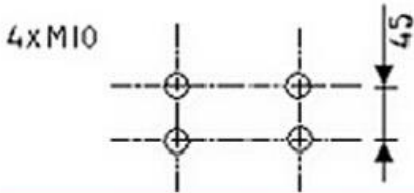
Flow rate m ³ /hr	Pressure max bar	Speed rpm	Power absorbed kW	Hydraulic Flow Lt/min	Hydraulic Pressure Bar
25	8	500	6	50	80
30	8	600	7.2	60	80
35	8	700	11	70	80

DISCHARGE
OUTLET

3"NPT FLANGE STANDARD



PUMP INLET
(SUCTION)



Other Transairvac products include:

- Hydraulic coolers
- Pressure line filters
- Compressors
- Vacuum pumps
- Blowers
- Rotary lobe pumps



TRANSAIRVAC
INTERNATIONAL LTD

Units 12 – 17, Croft Road Industrial Estate,
Newcastle, Staffordshire ST5 0TW
Tel: +44 (0)1782 710282 Fax: +44 (0)1782 710126
email: office@transairvac.com
web: www.transairvac.com