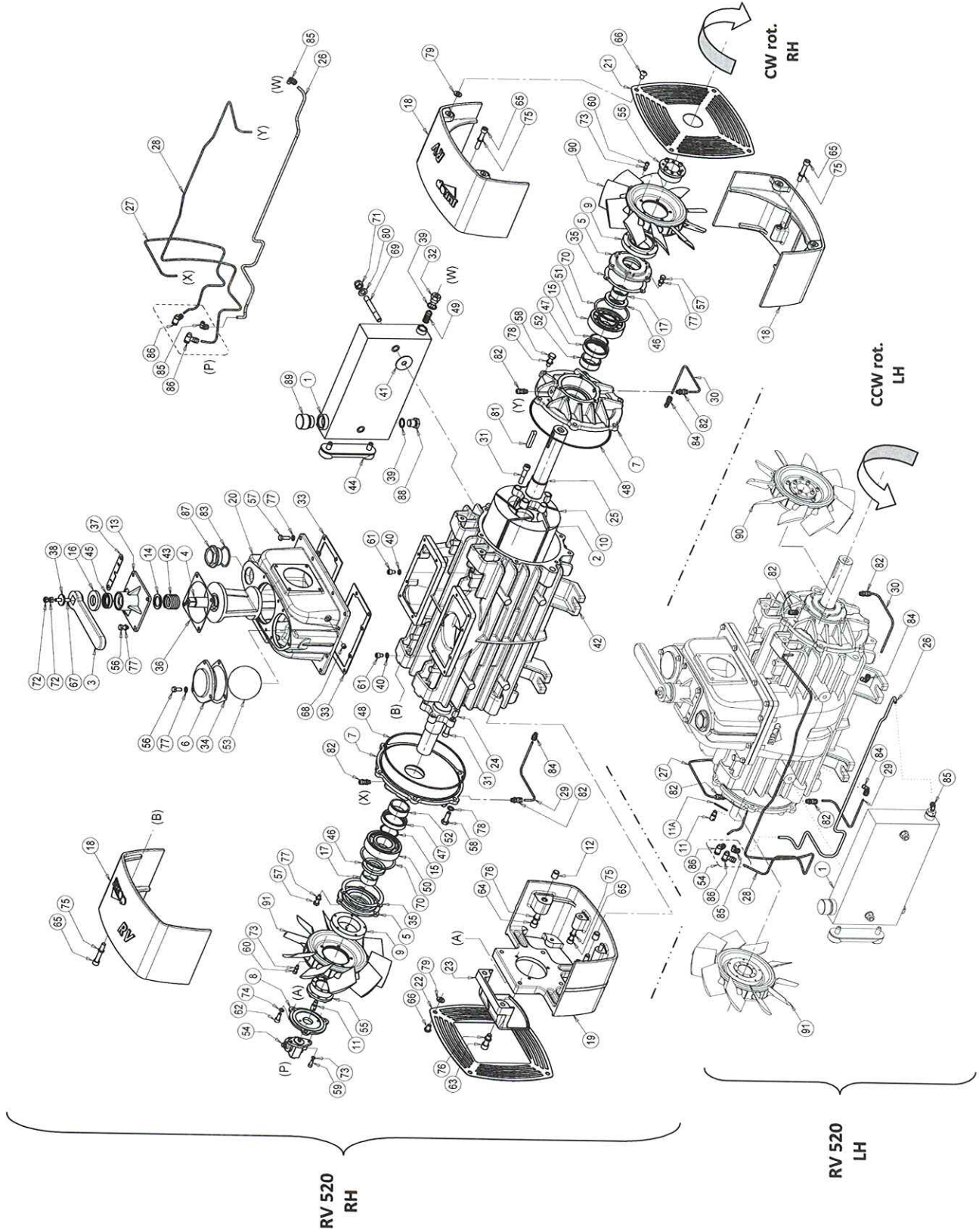


**16. RV 520 SPARE PARTS LIST**



## RV 520 SPARE PARTS LIST

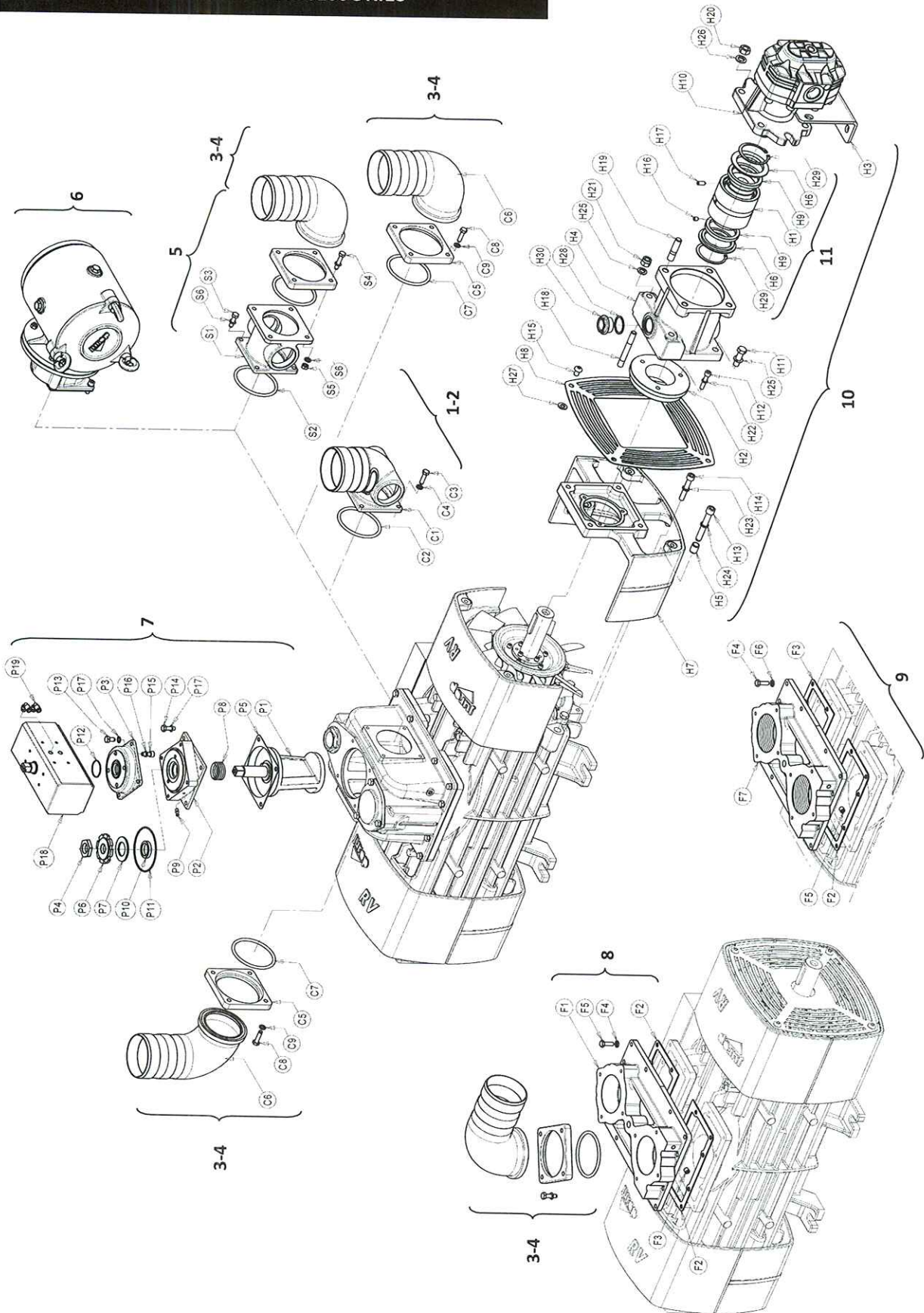
Pos.	Code	Description	Pcs	Pos.	Code	Description	Pcs
1	146700000	Oil tank	1	47	4022200113	Seal 70x55x15 VIT.	2
2	1601606900	RV520 vane	5	48	4022200309	OR 4875 VIT.	2
3	1605500100	Cock handle	1	49	4022300001	Nylon D.6 oil filter	1
4	1608502500	Cock	1	50	4023100047	Bearing 6309/C3	1
5	1610508200	Seal cap	2	51	4023115057	Bearing NJ 309 ECJ/C3	1
6	1610509800	4-way manifold cap	1	52	4023130035	Bushing 55x45x22	2
7	1610513900	RV flange	2	53	4023250502	Rubber ball D90 NBR	1
8	16105CF2B0	Oil pump flange	1	54	4024251000	2-way RH oil pump	1
9	1611001400	RV fan hub	2		4024251500 (*)	2-way LH oil pump	1
10	1621507900	RV520 rotor	1	55	4025428111	Locking set RCK16 40x65	2
11	1622002600	Oil pump drive	1	56	4026102806	Screw TE 8,8 M8x20 UNI5931 zinc.	7
11*	4026414617 (*)	Plug 3X40 UNI6873	1	57	4026102807	Screw TE 8,8 M8x25 UNI5931 zinc.	18
12	1622010200	RV conveyor dowel pin	2	58	4026102908	Screw TE 8,8 M10x30 UNI 5931 zinc.	12
13	1623100500	Cock cover	1	59	4026121305	Screw TCEI 8,8 M6x16 UNI5931 zinc.	2
14	1624027500	Cock spring spacer	1	60	4026121307	Screw TCEI 8,8 M6x20 UNI5931 zinc.	10
15	1624042100	RV520 distance ring	2	61	4026121401	Screw TCEI 8,8 M8x12 UNI5931 zinc.	2
16	1624202300	Cock regulation spacer	1	62	4026121405	Screw TCEI 8,8 M8x20 UNI5931 zinc.	3
17	1626001100	Seal bushing	2	63	4026121710	Screw TCEI 8,8 M12x35 UNI5931 zinc.	2
18	1627105100	RV conveyor	3	64	4026121719	Screw TCEI 8,8 M12x80 UNI5931 zinc.	2
19	1627105200	RV conveyor with support	1	65	4026121815	Screw TCEI 8,8 M10x60 UNI5931 zinc.	8
20	1627504600	Manifold	1	66	4026122005	Screw TBEI 10,9 M10x15 zinc.	8
21	1642008300	Anterior RV conveyor protection	1	67	4026135414	Screw 12,9 M8x45 zinc.	1
22	1642008400	RV conveyor with support protection	1	68	4026135504	Screw 12,9 M10x10 zinc.	1
23	1642100200	Rear oil pump protection	1	69	4026171211	Screw stud 8,8 M12x80	2
24	1650022100	Rear RV shaft	1	70	4026300025	Compensation ring LMKAS100C	2
25	1650022200	Anterior RV shaft	1	71	4026305508	Self-locking nut M12	2
26	1663064100	Oil tank RV520 RH suction line	1	72	4026308005	Nut M8 UNI5588 zinc.	2
	1663064200 (*)	Oil tank RV520 LH suction line	1	73	4026350503	Washer grower 6 sq. sec. DIN7980 zinc.	12
27	1663064300	Oil pump – rear flange oil line	1	74	4026350505	Washer grower 8 sq. sec. DIN7980 zinc.	3
28	1663064500	Oil pump – anterior flange RV520 RH	1	75	4026350506	Washer grower 10 sq. sec. DIN 7980 zinc.	8
	1663065100 (*)	Oil pump – anterior flange RV520 LH	1	76	4026350508	Washer grower 12 sq. sec. DIN7980 zinc.	4
29	1663064700	Rear RH/anterior LH RV520 housing oil line	1	77	4026350706	Washer grower 8 flat sec. zinc.	25
	1663064900 (*)	Anterior RH/rear LH RV520 housing oil line	1	78	4026351506	Washer M10 zinc.	12
30	1663064900	Anterior RH/rear LH RV520 housing oil line	1	79	4026357006	Flat washer M10 UNI6592 zinc.	8
	1663064700 (*)	Rear RH/anterior LH RV520 housing oil line	1	80	4026357007	Flat washer M12 UNI6592 zinc.	2
31	1672001600	Special screw TCEI M10x1,5	10	81	4026501006	Tang 12x8x56	1
32	1673001000	Oil filter plug	1	82	4026702000	Univ. dir. connection 4xG1/8	4
33	1680610200	Manifold gasket	2	83	4026702708	Washer G1"1/2	1
34	1680610500	Manifold cap gasket	1	84	4026706000	Univ. 90° connection 4xG1/8	2
35	1680707300	Seal cap gasket	2	85	4026706003	Univ. 90° connection 6xG1/8	2
36	1680707800	Cock cover gasket	1	86	4026706101	Turning connection 4xG1/8	2
37	1681006800	Cock cover plate	1	87	4026904005	Plug G1"1/2	1
38	1685002800	Washer 30x8,5 zinc.	1	88	4026904503	Plug M20x1,5	1
39	1685100300	Washer D20	2	89	4026910103	Plug G1	1
40	1685100800	Washer 8x14x1,5 copper	2	90	4028360000	Impeller 10/LD/F.F	1
41	1685600200	Washer VULKOLAN 90SH D.47,5x13x2	2		4028360001 (*)	Impeller 10/RS/F.F.	1
42	1687509400	RV520 housing	1	91	4028360001	Impeller 10/RS/F.F.	1
43	1691000000	Cock spring	1		4028360000 (*)	Impeller 10/LD/F.F.	1
44	4022106001	Vertical oil sight	1				
45	4022200030	Seal 41x27x10 GP NBR	1				
46	4022200044	Seal 65x45x8	2				

(\*) for RV 520 LH version

Kit of RV520 gaskets: 1892006000



**RV 520 SPARE PARTS LIST - ACCESSORIES**



## RV 520 SPARE PARTS LIST - ACCESSORIES

Pos.	Code	Description	Pcs	Pos.	Code	Description	Pcs
1	1852103400	Fixed suction conveyor ø80 kit		P17	4026351505	Washer M8 zinc.	8
C1	1627101300	Suction conveyor ø80	1	P18	4027100405	Pneumatic actuator	1
C2	4022200310	OR 6362 VIT.	1	P19	4027421206	Connection R15 6xG1/8	2
C3	4026102807	Screw TE M8x25 UNI5739 zinc.	4				
C4	4026350706	Washer grower 8 flat sec. zinc.	4	8		<b>Flanged manifold</b>	
				F1	1627504800	Flanged manifold	1
2	1852103500	Fixed suction conveyor ø100 kit		F2	1680610200	Manifold gasket	2
C1	1627101200	Suction conveyor ø100	1	F3	4026135504	Screw 12,9 M10x10 zinc.	1
C2	4022200310	OR 6362 VIT.	1	F4	4026350706	Washer grower 8 flat sec. zinc.	12
C3	4026102807	Screw TE M8x25 UNI5739 zinc.	4	F5	4026102807	Screw TE 8,8 M8x25 UNI5931 zinc.	12
C4	4026350706	Washer grower 8 flat sec. zinc.	4				
				9		<b>Threaded manifold</b>	
3	1852103900	Turning conveyor ø80 kit		F2	1680610200	Manifold gasket	2
C5	1610101100	Conveyor flange	1	F3	4026135504	Screw 12,9 M10x10 zinc.	1
C6	1627102700	Conveyor ø80	1	F4	4026350706	Washer grower 8 flat sec. zinc.	12
C7	4022200310	OR 6362 VIT.	1	F5	4026102807	Screw TE 8,8 M8x25 UNI5931 zinc.	12
C8	4026102808	Screw TE M8x30 UNI5739 zinc.	4	F6	1627504900	Threaded manifold	1
C9	4026350706	Washer grower 8 flat sec. zinc.	4				
				10		<b>Hydraulic drive</b>	
4	1852104000	Turning conveyor ø100 kit		H1	1470106700	HDR RV coupling	1
C5	1610101100	Conveyor flange	1	H2	1610052300	HDR RV flange coupling	1
C6	1627102400	Conveyor ø100	1	H3	1612033700	HDR drive bracket	1
C7	4022200310	OR 6362 VIT.	1	H4	1612501000	HDR motor mounting flange	1
C8	4026102808	Screw TE M8x30 UNI5739 zinc.	4	H5	1622010200	RV conveyor dowel pin	2
C9	4026350706	Washer grower 8 flat sec. zinc.	4	H6	1624042300	HDR RV coupling seal spacer	2
				H7	1627105200	RV conveyor with support	1
5	1852104100	Kit for safety valve		H8	1642008400	RV conveyor with support protection	1
S1	1627102500	Safety valve G2 support	1	H9	4022200011	Seal A 64x80x8 NBR	2
S2	4022200310	OR 6362 VIT.	1	H10	4024107001	RV520 hydraulic motor	1
S3	4026102807	Screw TE 8,8 M8x25 UNI5739 zinc.	4	H11	4026103004	Screw TE 8,8 M12x40 UNI5739 zinc.	3
S4	4026102810	Screw TE 8,8 M8x40 UNI5739 zinc.	4	H12	4026121409	Screw TCEI 8,8 M8x40 UNI5931 zinc.	2
S5	4026308005	Nut M8 UNI5588 zinc.	4	H13	4026121719	Screw TCEI 8,8 M12x80 UNI5931 zinc.	2
S6	4026350706	Washer grower 8 flat sec. zinc.	8	H14	4026121815	Screw TCEI 8,8 M10x60 UNI5931 zinc.	2
				H15	4026122005	Screw TBEI 10,9 M10x15 zinc.	4
6	185212L4B0	Suction filter kit components		H16	4026136005	Screw 12,9 M8x12	1
				H17	4026136009	Screw 12,9 M8x20	1
7	143028GZB0	Pneumatically operated 4-way valve kit		H18	4026171211	Screw stud 8,8 M12x80 UNI5911	2
P1	160858KBB0	Pneumatic actuator cock	1	H19	4026171304	Screw stud 8,8 M14x40 UNI5911	4
P2	161258H0B0	Pneumatic actuator support	1	H20	4026308008	Nut M14 UNI5588 zinc.	4
P3	1640580QB0	Pneumatic actuator cover	1	H21	4026305508	Self-locking nut M12	2
P4	167007ZAB0	Pneumatic actuator nut	1	H22	4026350505	Washer grower 8 sq. sec. DIN7980 zinc.	3
P5	1680707800	Cover gasket	1	H23	4026350506	Washer grower 10 sq. sec. DIN 7980 zinc.	2
P6	168409PQB0	Cock regulation ferrule	1	H24	4026350508	Washer grower 12 sq. sec. DIN7980 zinc.	2
P7	168529TFB0	Cock regulation spacer	1	H25	4026350709	Washer grower 12 flat sec. zinc.	4
P8	1691000200	Cock spring	1	H26	4026350710	Washer grower 14 flat sec. zinc.	4
P9	4022100100	Spherical greaser M6x1	1	H27	4026357006	Flat washer M10 UNI6592 zinc.	4
P10	4022200005	Seal 37x27x7	1	H28	4026359001	Washer 40x33,5x1,5	1
P11	4022200330	OR 3375	1	H29	4026510040	Seeger E63 UNI7435-30	2
P12	4022200331	OR 2137	1	H30	4026904003	Plug G1 zinc.	1
P13	4026102804	Screw TE M8x16 UNI5739 zinc.	4				
P14	4026102807	Screw TE M8x25 UNI5739 zinc.	4	11	1892006300	Complete joint kit RV HDR	1
P15	4026121405	Screw TCEI M8x20 UNI5931 zinc.	4				
P16	4026350505	Washer grower 8 sq. Sec. DIN7980 zinc.	4				